

# **CY21 Real Estate Tax Rate**

---

**Public Hearing**

**April 14, 2021**



# Assessment Year

- ▶ **When reassessment results in an increase of 1% or more in the total property tax levied, a public hearing must be held. Notice must be given at least 30 days before such hearing.\***
  - 1<sup>st</sup> advertisement ran in the Fluvanna Review on March 4, 2021

\*Code of Virginia §58.1-3321

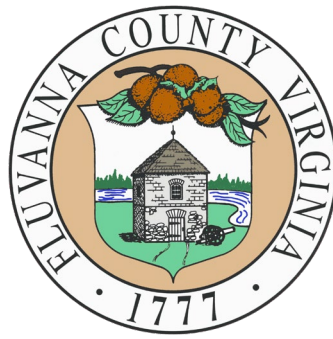


# Current and Proposed Tax Rate

<b>Tax Category</b>	<b>FY21 Adopted</b>	<b>FY22 Proposed</b>
Real Property	\$0.925	<b>\$0.92</b>
Public Service Corp.	\$0.925	<b>\$0.92</b>
Mobile Homes	\$0.925	<b>\$0.92</b>

- Total assessed value of real property increased by 6.87%
- **Equalized Rate: \$0.865**
- **\*Current Advertised FY22 Real Property Tax Rate: \$0.884**

*Tax Rates are per \$100 of Assessed Value*

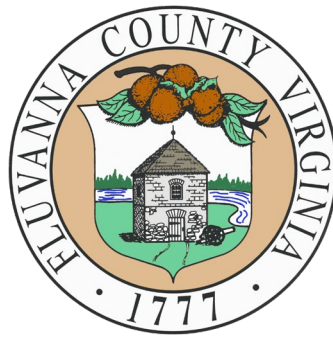


# **CY21 Real Estate Tax Rate**

---

## **Public Hearing**

A decorative graphic at the bottom of the slide consists of three overlapping, wavy shapes. The top shape is dark red, the middle is yellow, and the bottom is dark green.

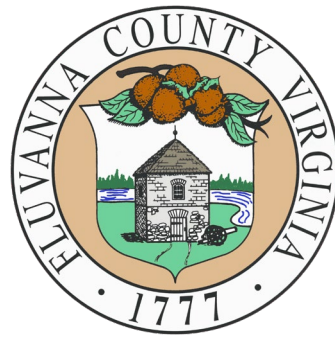


# CY21 Real Estate Tax Rate

---

## Discussion

A decorative graphic at the bottom of the slide consists of several overlapping, wavy shapes in shades of green, red, and yellow, creating a modern, abstract background.



# **FY22 CIP, Budget and Tax Rates**

---

**Public Hearing**

**April 14, 2021**



# Public Hearing Topics

- ▶ **FY22-26 Capital Improvements Plan (CIP)**
- ▶ **FY22 Operating Budget**
- ▶ **FY22 Tax Rates**

**NOTE:**  
All figures based  
upon the **\$0.884**  
Advertised Tax Rate



# Total Capital Improvements Plan

[CIP](#)

<b>Fiscal Year</b>	<b>Capital Fund</b>
<b>2022</b>	<b>\$25,500,000</b>
<b>2023</b>	<b>\$4,242,540</b>
<b>2024</b>	<b>\$2,976,775</b>
<b>2025</b>	<b>\$5,833,033</b>
<b>2026</b>	<b>\$4,705,814</b>
<b>TOTAL:</b>	<b>\$43,258,162</b>





# Governmental, Capital & Enterprise Summary

	Adopted Budget FY21	Proposed Budget FY22	Increase/ (Decrease)	% Change
<b>GOVERNMENTAL</b>				
REVENUES	\$ 77,362,980	\$ 84,189,506	\$ 6,826,526	8.8%
EXPENDITURES	\$ 76,152,662	\$ 82,811,426	\$ 6,658,764	8.7%
<b>CAPITAL FUND</b>				
REVENUES	\$ 113,000	\$ 25,100,000	\$ 24,987,000	22,112.4%
EXPENDITURES	\$ 513,000	\$ 25,500,000	\$ 24,987,000	4,870.8%
<b>ENTERPRISE FUND</b>				
REVENUES	\$ 2,311,261	\$ 2,176,473	\$ (134,788)	(5.8)%
EXPENDITURES	\$ 3,121,579	\$ 3,154,553	\$ 32,974	1.1%
<b>TOTAL REVENUES</b>	\$ 79,797,241	\$ 111,465,979	\$ 31,678,738	39.7%
<b>TOTAL EXPENDITURES</b>	\$ 79,797,241	\$ 111,465,979	\$ 31,678,738	39.7%

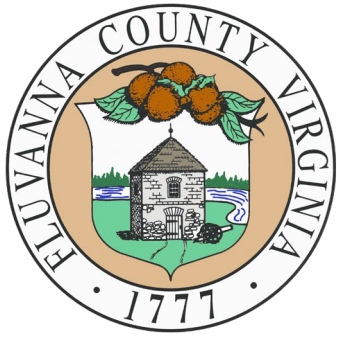


# Current and Proposed Tax Rates

**Budget**

<b>Tax Category</b>	<b>FY21 Adopted</b>	<b>FY22 Proposed</b>
Real Property	\$0.925	<b>\$0.884</b>
Mobile Homes	0.925	<b>0.884</b>
Personal Property (Residential)	4.35	<b>4.35</b>
Personal Property (Business)	2.90	<b>2.90</b>
Machinery & Tools	1.90	<b>1.90</b>

*Tax Rates are per \$100 of Assessed Value*

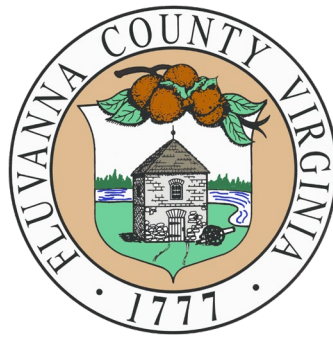


# **FY22 Budget Adoption**

**April 21, 2021**

**7:00 pm**

**Library Meeting Room**

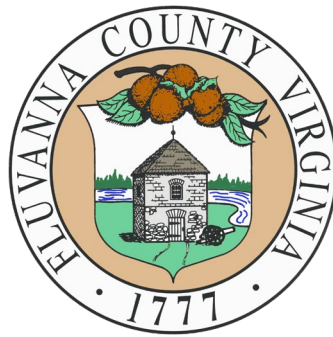


# **FY22 CIP, Budget and Tax Rates**

---

## **Public Hearing**

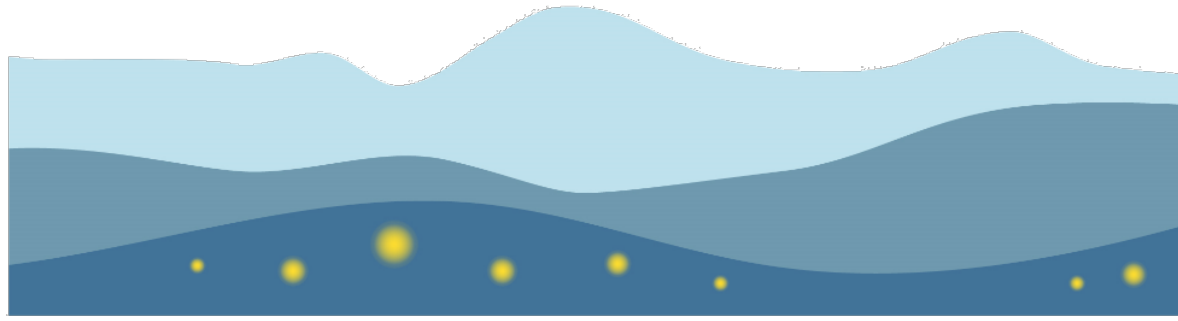
A decorative graphic at the bottom of the slide consists of overlapping, wavy shapes in dark green, red, and yellow.



# **FY22 CIP, Budget and Tax Rates**

---

## **Discussion**



# firefly

FIBER BROADBAND<sup>SM</sup>

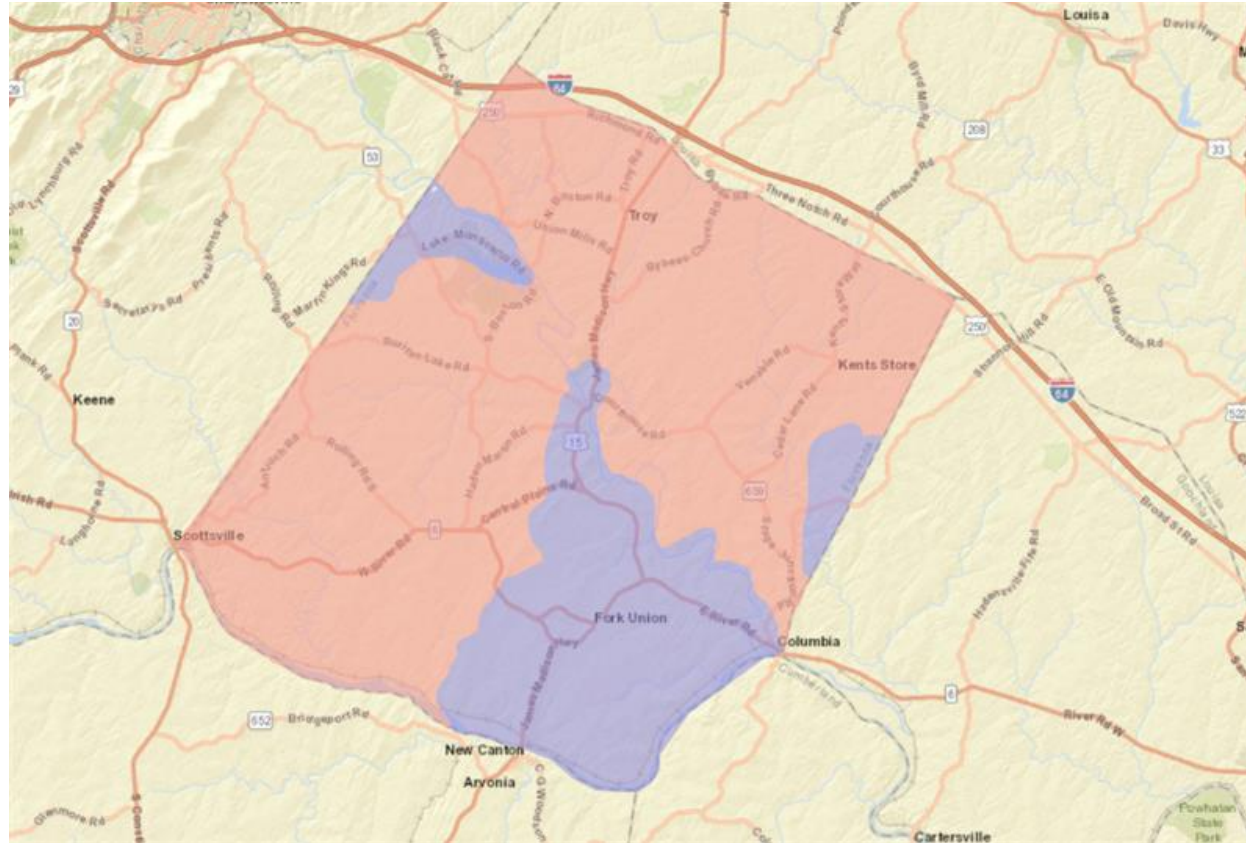
 Powered by CVEC







firefly  
FIBER BROADBAND<sup>SM</sup>

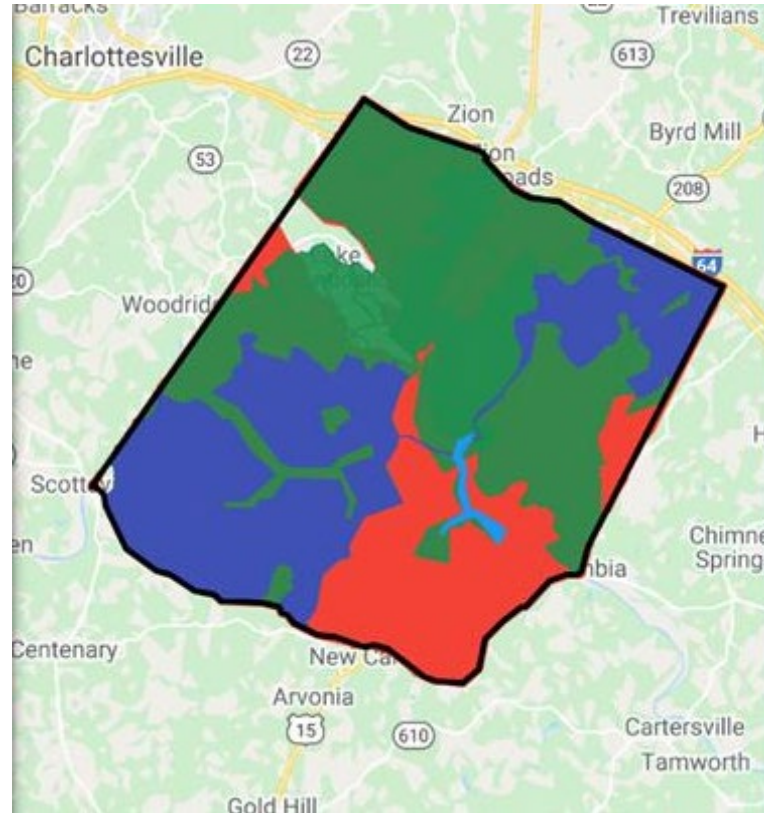
# Firefly/CVEC and Dominion Territory

- Firefly/CVEC
- Dominion



# Underserved Areas in the County

-  CVEC/Firefly Footprint
-  ReConnect Awarded Area
-  FCC-Underserved Areas
-  Cares Funding Build





# Steps and Timeline

---

- Phase 1 – Sign the MOU
- Phase 2 – Project Development Study
- Firefly will identify eligible areas, preliminary final design, and budget
- Presentation to County with costs and potential sources of funds
- County decides whether to move forward
- Phase 3 – Dominion files for SCC approval
- Work begins to obtain easements and begin make-ready design and construction
- Project construction in 2022 and following year

## What We Are Asking Today

---

- Consider signing the MOU
- Help define which areas are served and unserved

## What Does Signing the MOU Mean For the County?

- Fluvanna County will be a part of the study (Phase 1)

# Questions?

---



**firefly**  
FIBER BROADBAND™



# Redistricting 2021

---

**Eric Dahl, County Administrator**

**Kelly Belanger Harris, Assistant County Administrator**

**April 14, 2021**

A decorative graphic at the bottom of the slide consists of a dark blue background with a yellow horizontal band that tapers to a point on the right side.



## Redistricting – What is known

- ▶ Reapportionment and redistricting is required every 10 years
- ▶ Election districts and precinct boundaries established from the 2010 census
- ▶ New districts are adopted by ordinance
- ▶ Columbia District will lose population equal to the incarcerated population at Fluvanna Women's Correctional Center (~1000 on April 1, Census Day)
- ▶ Board can increase, decrease, or maintain the current number of voting district
- ▶ District population reapportionment must be +/- 5%

*Constitution of Virginia, Article VII, Section 5*

*Code of Virginia, Section 24.2-304.1*

*Fluvanna County Code, Chapter 2, Article 2*



# Redistricting

- ▶ **County must reapportion and redraw election district boundaries every 10 years in the year ending in one following the decennial census**
  - Latest estimate for arrival of raw Census data is August; adjusted data in September
- ▶ **Districts must: be compact, contiguous, and have clearly observable boundaries**
  - Waterways, utility easements, roads, Magisterial District boundary lines
- ▶ **Apply equal population standard**
  - Estimated population: 30,439\*
  - Five districts = 6,088/district
  - Deviation: +/- 5% per district; no greater than +/- 10% overall
- ▶ **2020 Decennial Census population figures, as adjusted by the Division of Legislative Services**
  - Women's Prison population on April 1, 2020 = 1,062
- ▶ **Local governing body members and redrawn/reapportioned districts**

*\*Populations estimates updated to account for census blocks and additional addresses added since April 1, 2010. This estimate does not account for any housing vacancies.*



# Population Projection 2021

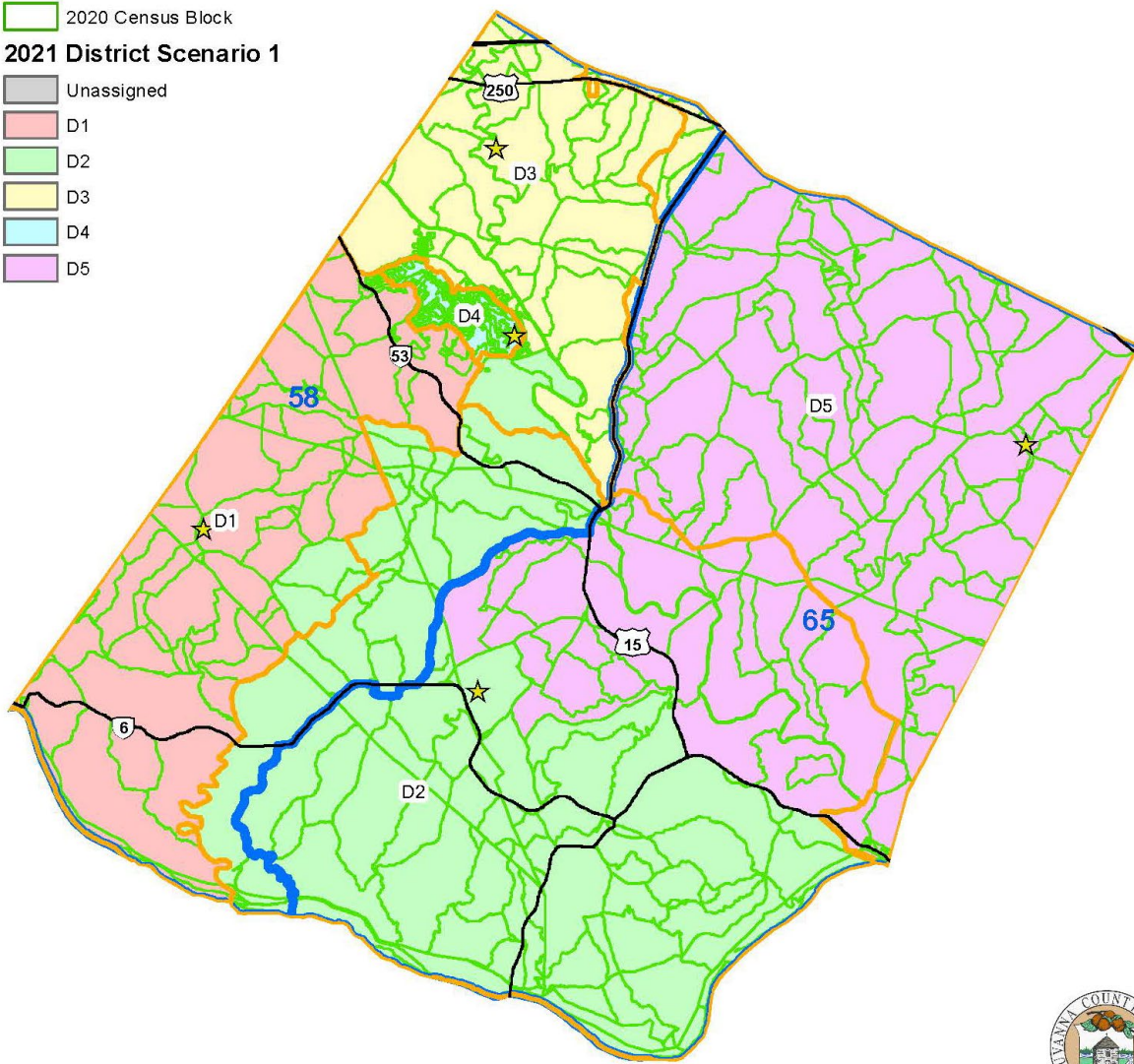
Election District	2010 Population	2020 Projections	Deviation from 6088	% Deviation
Columbia D5	5,187	4,884	-1204	19.80%
Cunningham D1	5,229	6,386	298	4.90%
Fork Union D2	4,650	6,052	-36	0.60%
Palmyra D3	5,355	6,817	729	11.97%
Rivanna D4	5,270	6,300	212	3.49%
<b>TOTAL</b>	<b>25,691</b>	<b>30,439</b>		

Voting Precincts must be wholly contained within Virginia State district lines

- Costs: **Columbia District/Precinct:** currently sits in two Virginia House Districts
  - In the proposed scenario, Columbia District western boundary moves to east of Rt 15 to eliminate the split district.
- **Fork Union District/Precinct:** sits in two Virginia House Districts
  - Proposed scenario moves the northern boundary farther north, moving several Census Blocks previously assigned to Palmyra District.
  - An additional precinct is necessary in order to comply with State law ([§ 24.2-307. Requirements for county and city precincts.](#))
    - Precinct
      - \$30,000 1<sup>st</sup> year
      - \$10,000/year thereafter.



- ★ BOS Address
- 2020 Election District
- VA House District
- 2020 Census Block
- 2021 District Scenario 1**
- Unassigned
- D1
- D2
- D3
- D4
- D5



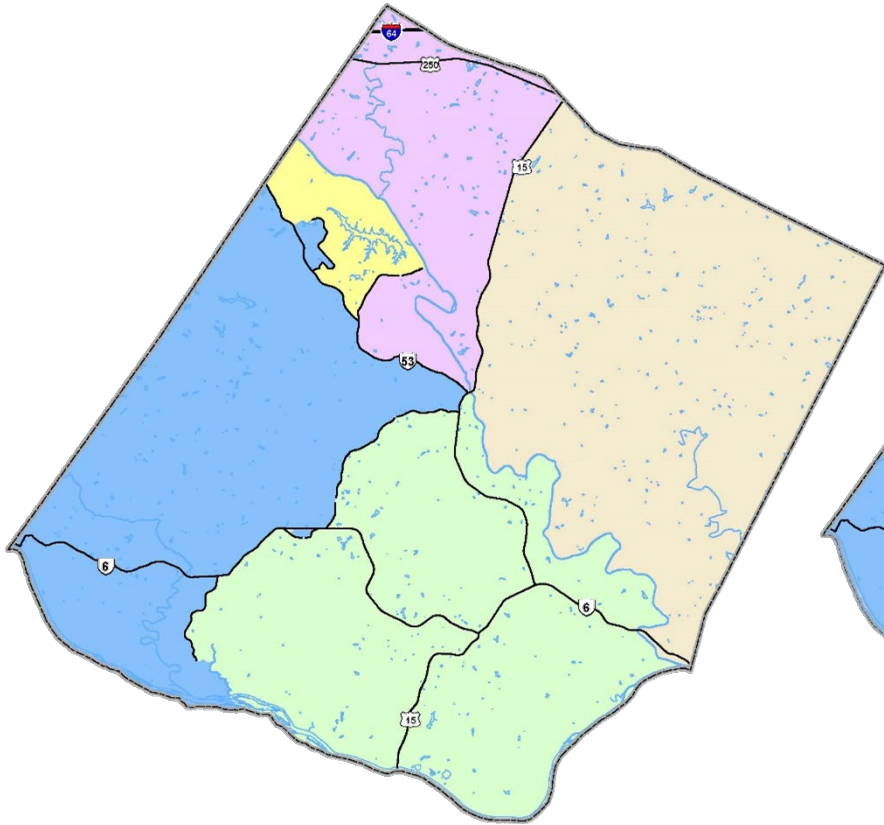
[Link to Map](#)



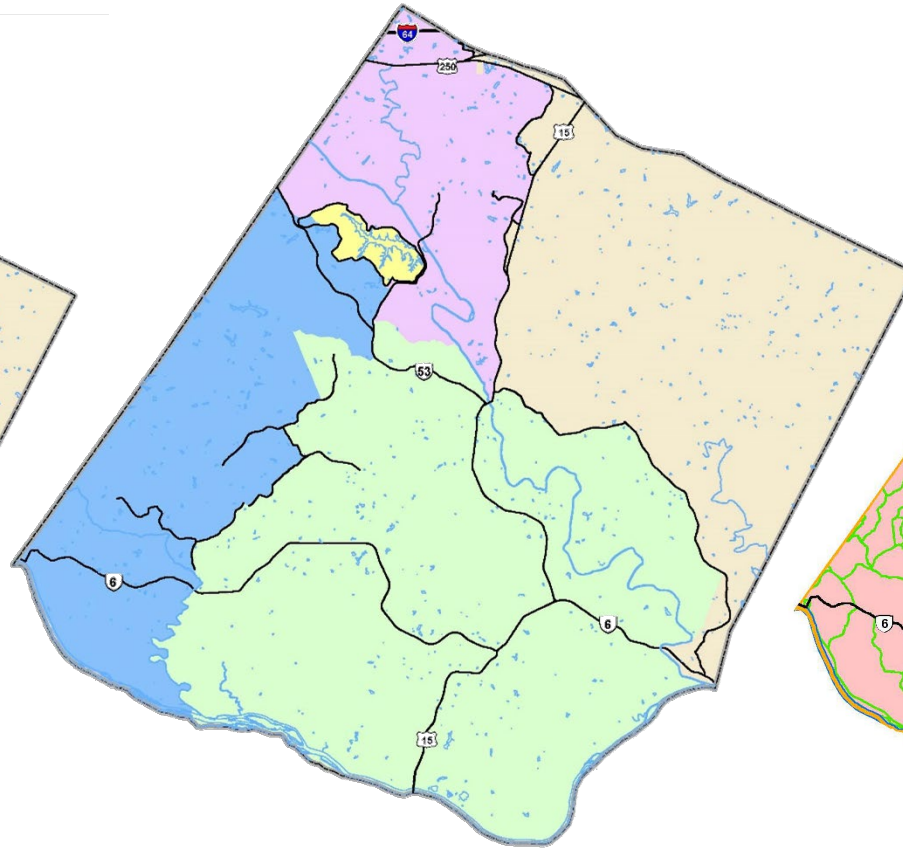


# Voting Districts 2001 - present

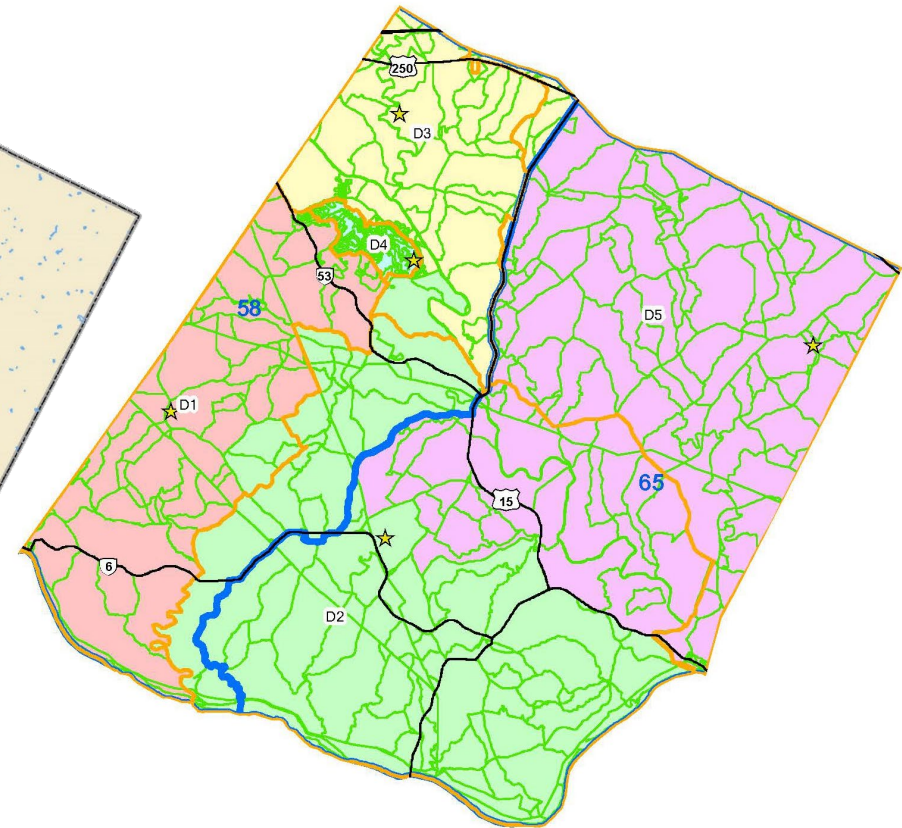
## 2001-2010 Voting Districts



## 2011-2020 Voting Districts



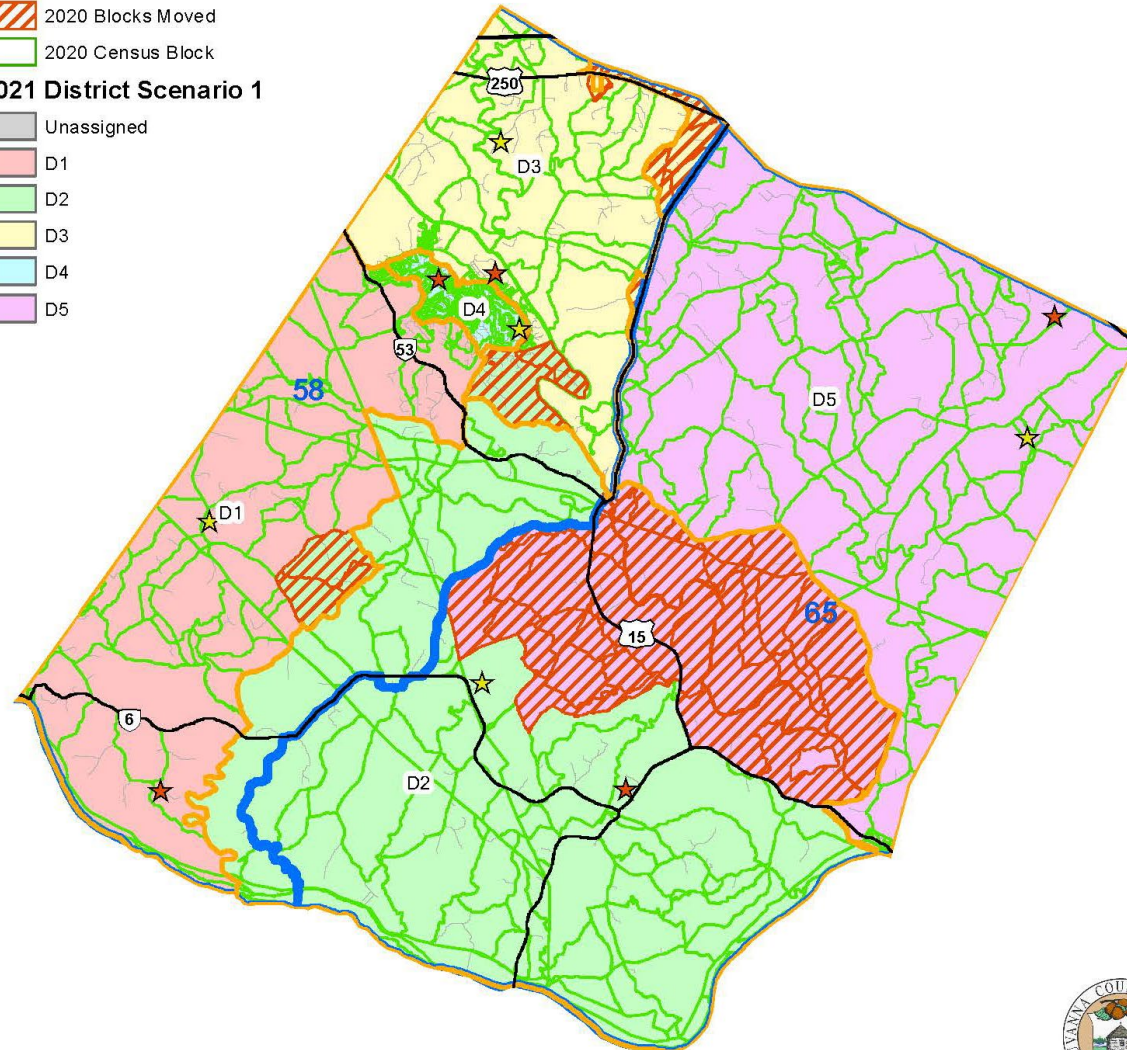
## 2021 Scenario 1





# Redistricting Scenario – Census Blocks Reassigned

- ★ BOS Address
- ★ SBM Address
- 2020 Election District
- VA House District
- 2020 Blocks Moved
- 2020 Census Block
- 2021 District Scenario 1**
- Unassigned
- D1
- D2
- D3
- D4
- D5



[Link to Map](#)



# Questions?