

# Bremo Power Station Coal Ash Removal Project

# Dominion Energy's Core Values



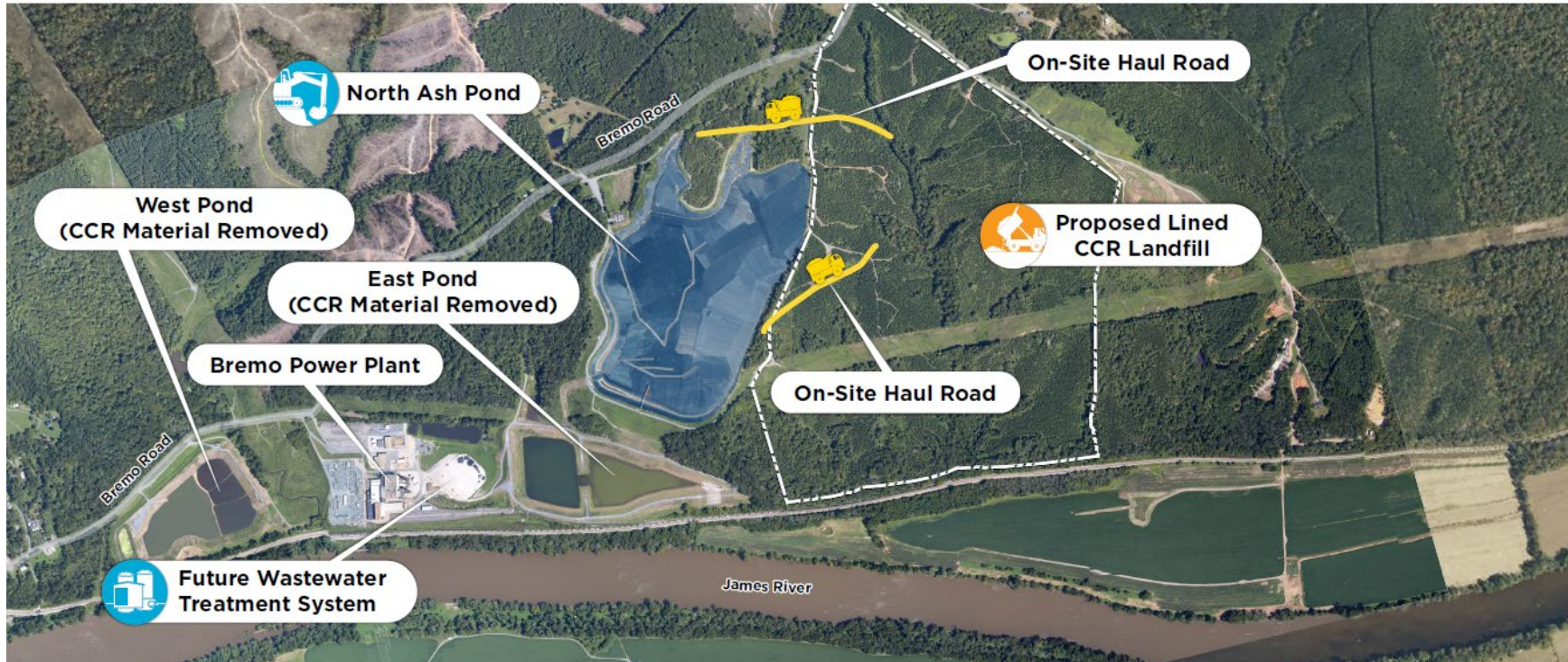
# Bremo Coal Ash Current Status



Approximately 6.2 million cubic yards of Bremo CCR material is consolidated and stored in the North Ash Pond under a temporary rain cover. The full rain cover is designed to prevent dust and keep rainwater out of the pond while the material is in storage.

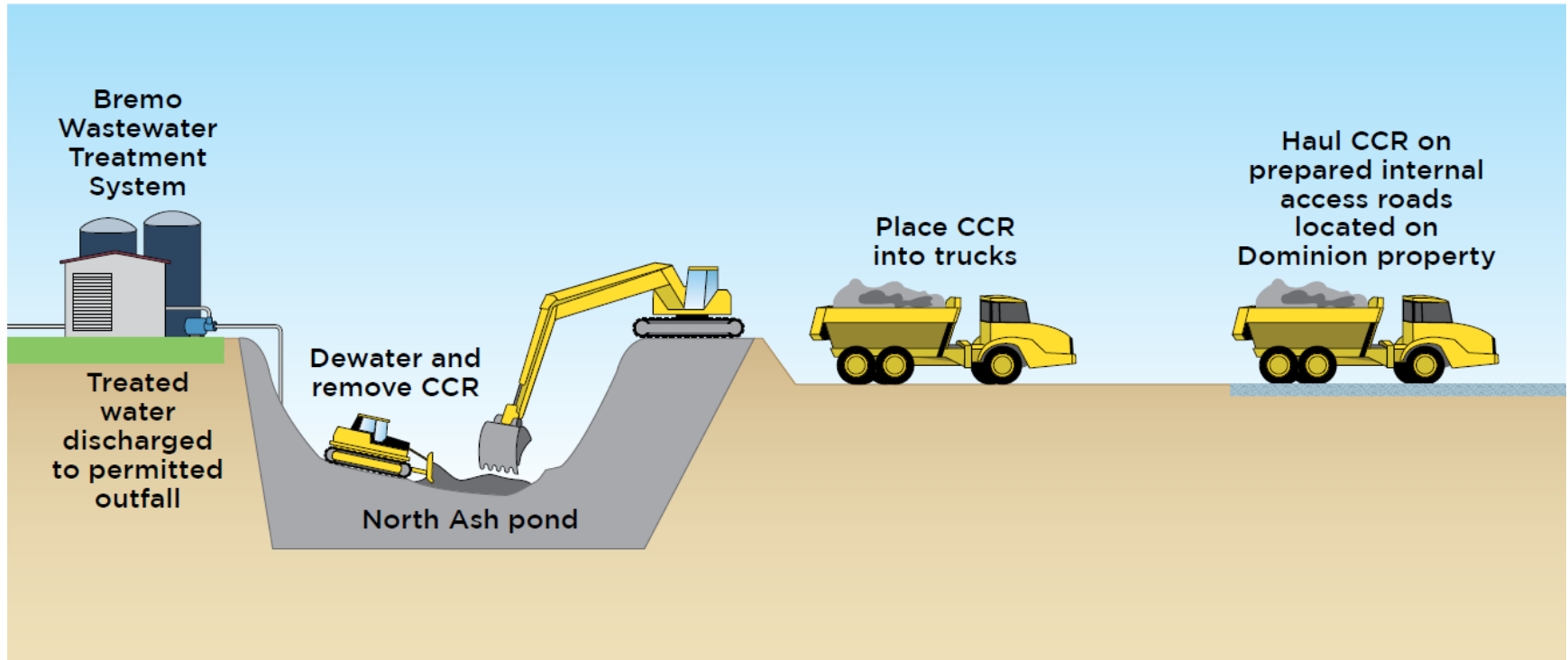
VDEQ has confirmed that all CCR material is removed from the East and West Ash Ponds.

# Bremo Bluff Power Station CCR Removal Project

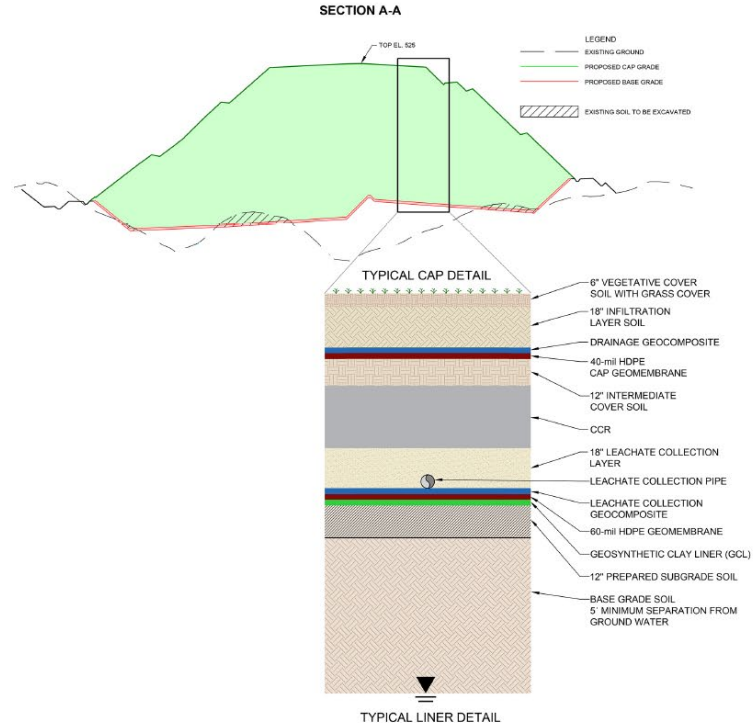
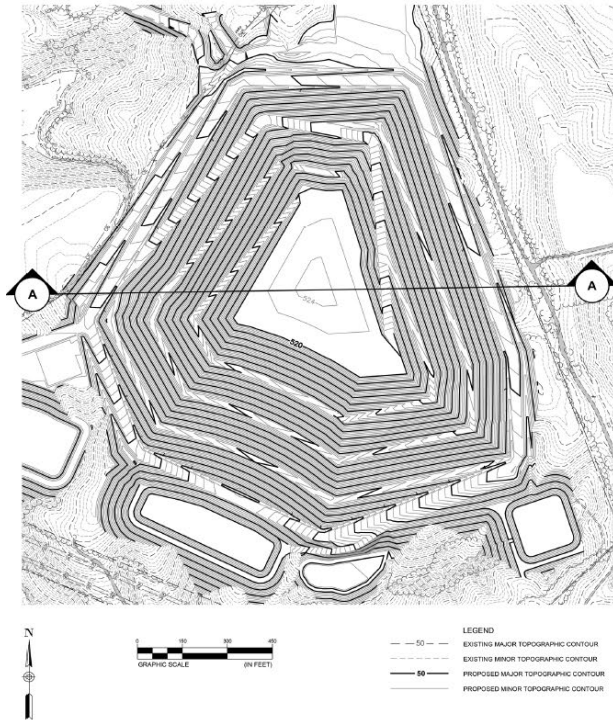




# Excavation of North Ash Pond and Disposing on site in new Lined CCR Landfill

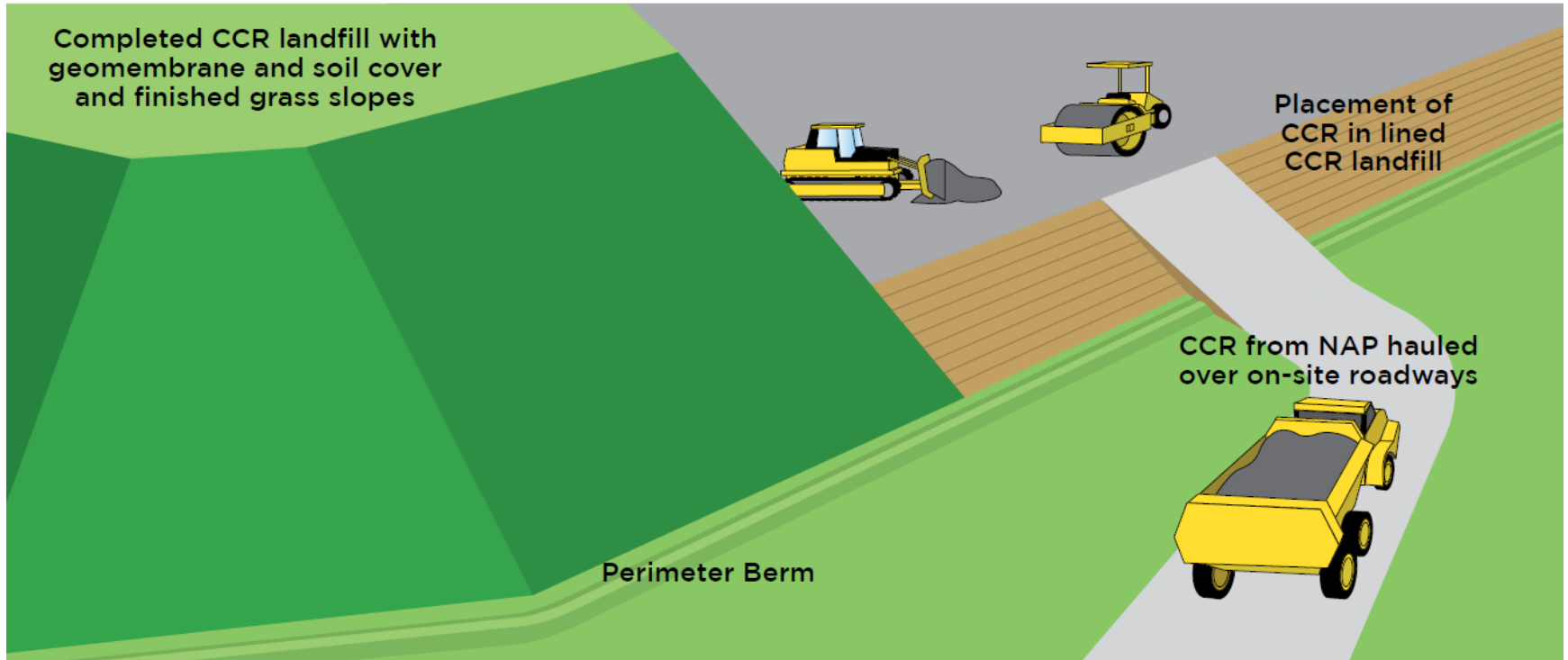


# LANDFILL CONSTRUCTION DETAIL





# Proposed Lined CCR Landfill



# VIEWSHED



Highway View



James River View



Driveway View



# Community Commitments

- Coal ash will not be transported on public roads
- New or improved community park, recreation, and green space areas
- Opportunities for local workforce
- Focused commitment to leaving Bremo and West Bottom Roads in current or better condition
- Increased assurance of safe and reliable public drinking water

## Our Commitment to Getting it Right



Protect the environment by meeting state and federal standards.



Ensure safety in our communities - we live here, too.



Communicate with our neighbors every step of the way.

# Next Steps

**April 1, 2021-** Rezoning and SUP Applications Filed with Fluvanna County

- Rezone the landfill property from A-1 to I-1
- Special Use Permit to allow for the construction and operation of the landfill

**Summer 2021-** Solid Waste Permit Application Filed with VDEQ, ACOE Joint Permit Application Submitted

**Post 2021-** Additional Local Permitting (Major Site Plan, etc.)

## ESTIMATED CONSTRUCTION TIMELINE

**2023-2027-** Landfill Construction

**2024-2030-** Ash moved from North Ash Pond to landfill

- Ash will be hauled on Dominion Energy property, not on public roads

**2030-2031-** Final cover installed

# Questions?