

How much will the project cost?

The total estimated project costs range from \$40 to \$45 million. The JRWA portion of the project is estimated to cost \$7 to \$9 million.

How much of the cost will belong to each County?

Fluvanna County will be responsible for 50% of the Capital Costs associated with the small portion of the Project belonging to the JRWA.

Louisa County will be responsible for the other 50% of the capital costs associated with the JRWA portion of the project **and** all other costs associated with infrastructure north of Route 6.

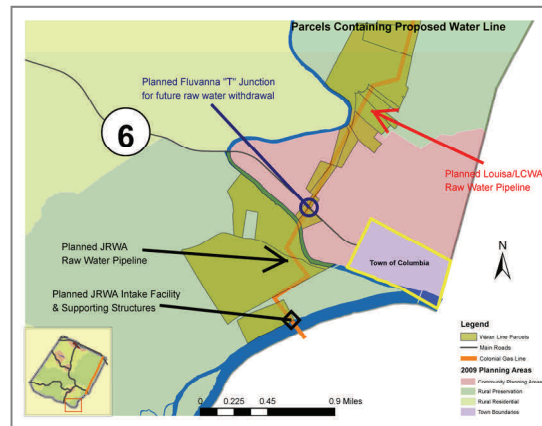
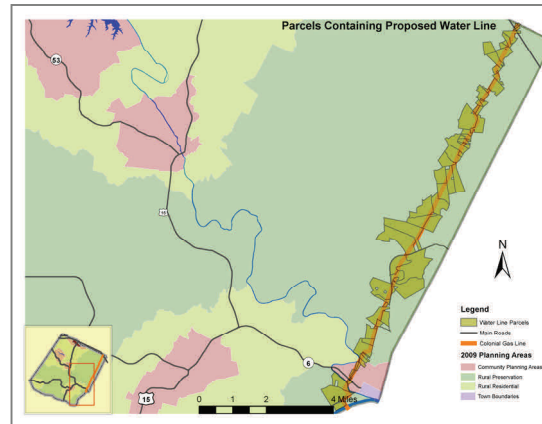
Construction costs will have to be financed. Who is responsible for paying the debt?

Long-term financing will be needed, and it is anticipated that 30-year bonds will be used ("issued"). Financing for the JRWA project will be borne equally by Louisa and Fluvanna Counties. Louisa County will separately finance the remainder of the project.

I heard that the pipeline would draw so much water from the James River that the local eco-systems will change. Is that true?

This is not true. Numerous Federal and State agencies have reviewed the permit specification and must approve the final plans prior to construction.

Approximate Pipeline Routing



Who to call with Questions

In Fluvanna County:

Wayne Stephens
PW Director / County Engineer
Ph: (434) 591-1925

Bobby Popowicz
Community Development Director
Ph: (434) 591-1910



JAMES RIVER WATER PROJECT

Facts you need to know...

A collaboration between the Counties of Fluvanna and Louisa to support our long-term water needs.



September 2015



James River Water Project Frequently Asked Questions

Why is the pipeline being built?

The pipeline is being constructed to supply Fluvanna and Louisa Counties with a projected 50 year water need as identified in their respective Long Range Water Supply Plans mandated by the Virginia Department of Environmental Quality. A sustainable and plentiful water supply is a key driver for economic development. Each County's vision for economic development differs in many respects; however a quality surface water source remains the catalyst for implementing their respective plans.

Where will the pipeline go?

And how was the route of the pipeline chosen?

The pipeline will originate with an intake structure at the James River near the Town of Columbia. The raw water line is planned to run primarily within existing CVEC electric line easements from the James River to a new Water Treatment Plant located in Louisa County near Ferncliff.

Who "owns" the line, the two Counties or some other public body?

The James River Water Authority will own all infrastructure from the river intake up to Route 6. From Route 6 north, all infrastructure will be owned by the County of Louisa.

What's meant by "raw water line" and "drinking water line"? What's the difference?

"Raw Water" is the untreated river water that, in this case, will be delivered to a facility for treatment, located at Ferncliff. Raw water is considered "non-potable" water that cannot be used for domestic consumption.

"Drinking Water" is the treated water that will be delivered to the end user for domestic consumption.

Where will the "finished" or drinking water pipes be located?

Finished or drinking water will be treated in Louisa County and the distribution pipes will be located primarily along the Rt. 250 corridor.

When will the construction begin?

And how long will it take?

Construction is planned to begin in the summer of 2016, with an anticipated completion date of 2018.

Will the project require the use of private property or easements on private property?

Yes, once the final route of the pipeline has been identified, the James River Water Authority and the Louisa County Water Authority will be contacting specific property owners that the pipeline will cross to initiate the easement acquisition process. These easements are agreements between the property owner and the Authorities that allow the Authority access to the property for construction and maintenance of the pipeline.

Who may connect to the "raw water" line in the future?

The raw water line is for the benefit of the two counties. Therefore, Fluvanna and Louisa Counties will control who, when, and where any connections may be made to the raw water line.

Current plans call for one connection for each county to the JRWA portion of the project, and one additional future connection for Fluvanna County along the Louisa-owned portion of the pipeline. The specific location of the future connection will be decided by Fluvanna County.

In addition, there will be fire hydrants located at key access points along the entire length of the water pipeline from the James River to Ferncliff. This will improve fire fighting support in the eastern part of Fluvanna.